



No.145, 11th Industry Rd. Ta-Li City,
Taichung Hsien 412 Taiwan
Phone:886-4-2491-7585
E-Mail:spar@tcts.seed.net.tw

Project _____ Item # _____ Quantity _____



SP-502A Mixer

Model **SP-502A 5 Quart Mixer**



Standard Features

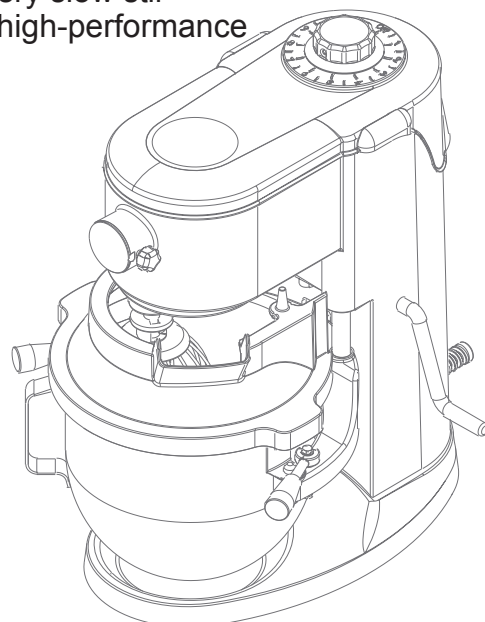


- CE approved by TUV
- 1HP DC Carbon Brush Motor
- Direct Gear Driven Transmission
- 10 Variable Speeds Control ranges from a very fast whip to a very slow stir
- Heavy-Duty & High Torque all-steel gear transmission delivers high-performance mixing action.
- Mixing Bowl Capacity 5 Liter (5.2 Quart)
- Maximum Batches 750g Flour (with 60% moisture)
- Overload Reset Button for Motor Protection
- Commercial-style motor protection ensure motor longevity
- Light & handy, Compact Size Design for Kitchen Space

Standard Accessories



- 5.2 Quart Stainless Steel Bowl
- Beater (stainless steel)
- Whisk (stainless steel)
- Spiral Hook (stainless steel)
- Pastry Knife



SPAR FOOD MACHINERY MFG.CO.,LTD.

www.sparmixers.com



No.145, 11th Industry Rd. Ta-Li City,
Taichung Hsien 412 Taiwan
Phone:886-4-2491-7585
E-Mail:spar@tcts.seed.net.tw

Specifications

● Motor <<<<<

750W, grease packed ball bearing, air-cooled,
110/60Hz, 220/50Hz, Single phase

● Controls <<<<<

Spar Mixer controls are top-mounted to give easy
access in cramped kitchen environments.

● Cord and Plug <<<<<

Single phase are hard wired

● Transmission <<<<<

The unique design yields high-torque mixing power
while avoiding the high cost encountered repairing
direct-drive transmission components.

● Speeds <<<<<

1. 1st gear 40 rpm
2. 2nd gear 70 rpm
3. 3rd gear 90 rpm
4. 4rd gear 106 rpm
5. 5rd gear 140 rpm
6. 6rd gear 170 rpm
7. 7rd gear 190 rpm
8. 8rd gear 210 rpm
9. 9rd gear 230 rpm
10. 10rd gear 260 rpm

● Bowls and Agitators <<<<<

Standard equipment includes a
5Litres high quality stainless steel
bowl, dough hook, flat beater, and
whip. A sturdy hand lever on the
body column raises and lowers the
bowl as well as locking in place at
the top and bottom positions.

● Finish <<<<<

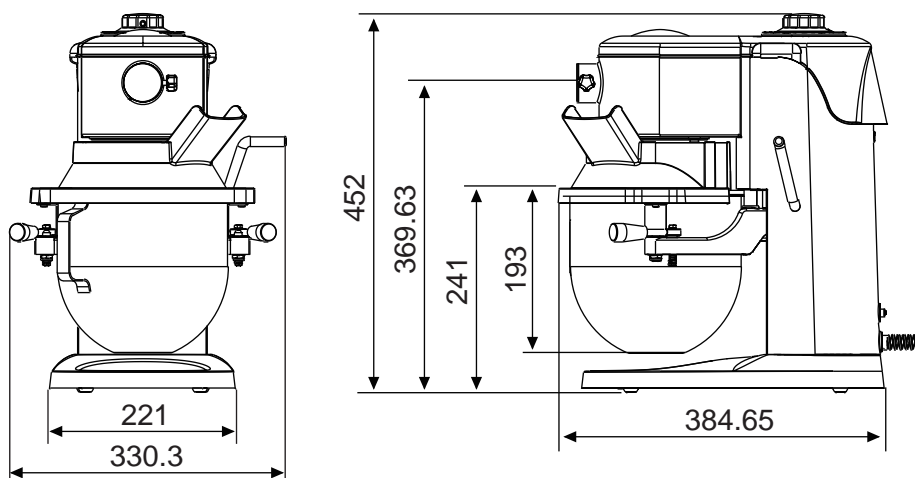
White epoxy enamel

● Shipping Information <<<<<

N.W. 15 kgs
G.W. 16 kgs

Carton Size: (L x W x H)
40cm x 31cm x 45.5cm

Cartons are affixed to an under-
sized skid (pallet), the weight and
diminsions of this skid are not
included above and may vary from
shipment to shipment.



UNIT : mm